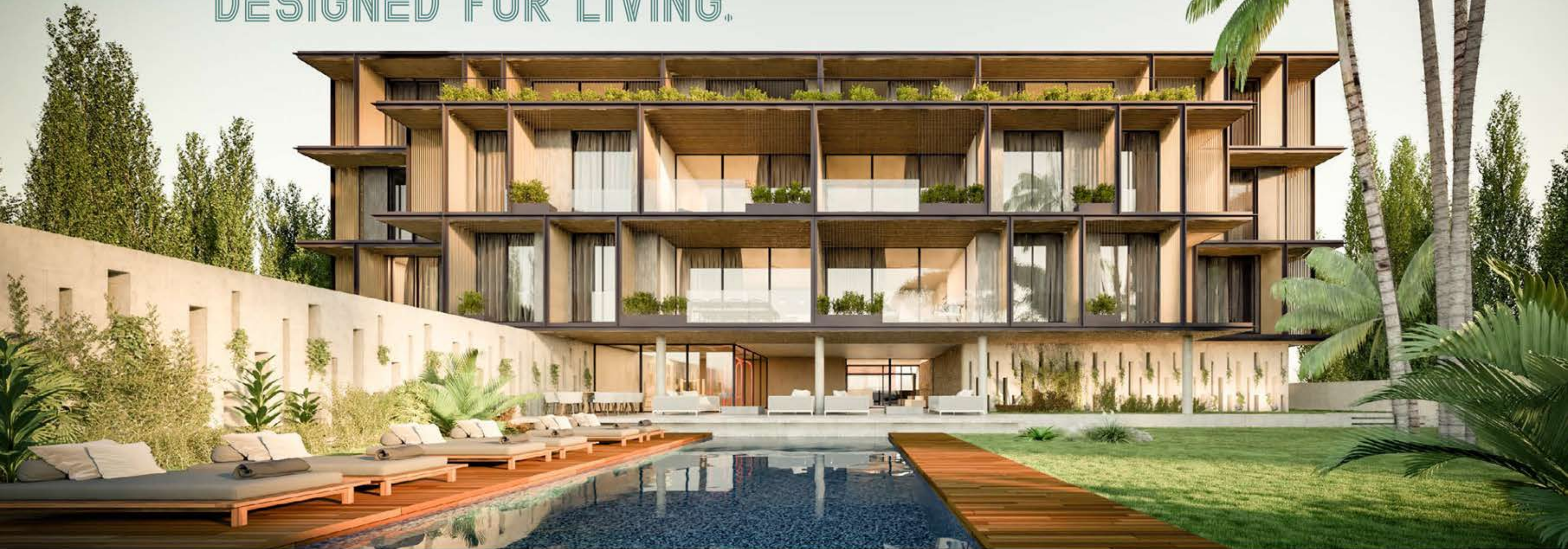




THE LENNOX

RESIDENCES • LIMASSOL

DESIGNED FOR LIVING.



LIFE IN PERFECT HARMONY

A symphony of surprise and anticipation is stirring in Limassol's, Ag. Athanasios. The Lennox signature selection of beautifully designed 2 and 3 bedroom apartments usher in benchmark design excellence to Limassol's flourishing new heart.

The contemporary styled apartments of this gated community are smartly arranged around exceptional facilities, such as pool, gym, and playground.

Its unique position, only 2 km away from Limassol's best beaches, touristic attractions and within a short drive to the city centre with its business infrastructure, entertainment venues and educational facilities will provide perfect

conditions for living for young working adults—piqued by an innate desire for a more sophisticated and vibrant lifestyle. Whereas the proximity to main highway leading to the Paphos and Larnaca airports within 40 minutes will complement your enjoyment of Limassol's urban lifestyle.

The Lennox comprises of only 10 apartments with convenient access to the common lobby, pool, gym, lush gardens, and the playground.

Beautiful interiors harmonise with understated architecture and luscious landscaping to create a modern lifestyle. An architectural icon offering sophisticated living for young professionals to lifestyle seekers.



PLACES OF INTEREST

1. Amathus Archaeological Site
2. Limassol Castle
3. Limassol Marina
4. St Raphael Marina
5. Old Port Marina
6. Limassol Port
7. Limassol Nautical Club
8. Ag. Gerogios Alamanou

GALLERIES, MUSEUMS, ENTERTAINMENT

9. Molos Park
10. Municipal Gardens / Zoo
11. Municipal Art Gallery
12. Archaeological Museum
13. Uptown Square Restaurant
14. Monte Caputo
15. Sailors Rest Restaurant
16. Limassol Mall
17. Cinema
18. Cyprus Sailing Club
19. Vikla Golf Course
20. Tsirion Stadium

EDUCATION

21. Foley's Grammar School
22. Logos School of English Education
23. The Grammar School
24. Cyprus University of Technology
25. The Heritage Private School
26. Pascal English School



ONLY 10 APARTMENTS



2 KM FROM THE BEST BEACHES



2 MIN DRIVE TO INTERNATIONAL SCHOOLS



5 MIN DRIVE TO THE CITY CENTER



GATED COMMUNITY WITH COVERED PARKING



FACILITIES: POOL, GYM, PLAYGROUND



CLOSE TO ALL AMENITIES



PENTHOUSE WITH PRIVATE POOL SPA

OWN THE LIFESTYLE.

The Lennox's apartments provide an abundance of space to live life to the fullest.



AN ODYSSEY OF OPEN SPACES

The apartments at The Lennox combine contemporary elegance with subtle, signature Lennox touches.

Wrap yourself in the comfort of The Lennox. Refined living environments that offer the best of indoor-outdoor living.





The Lennox is a building literally designed to make you feel good. We want people to be as healthy and happy as possible, and we're creating facilities and spaces that encourage exactly that.

WHERE EVERYTHING IS IN TUNE.

Contemporary in form but classic in function.



Artist's Impression

"Live the life you have imagined."

—Henry David Thoreau

PICTURE
PERFECT
PENTHOUSES

AN OUTSTANDING COMPOSITION

With generous layouts that are designed to make the most of the sweeping vistas of the surrounding area, you'll enjoy a harmonious living environment in your apartment at The Lennox.



INTERIORS

Open plan living areas designed for total comfort and ease, built for the modern lifestyle, so you can entertain a group or retreat to the lounge for some quiet time.



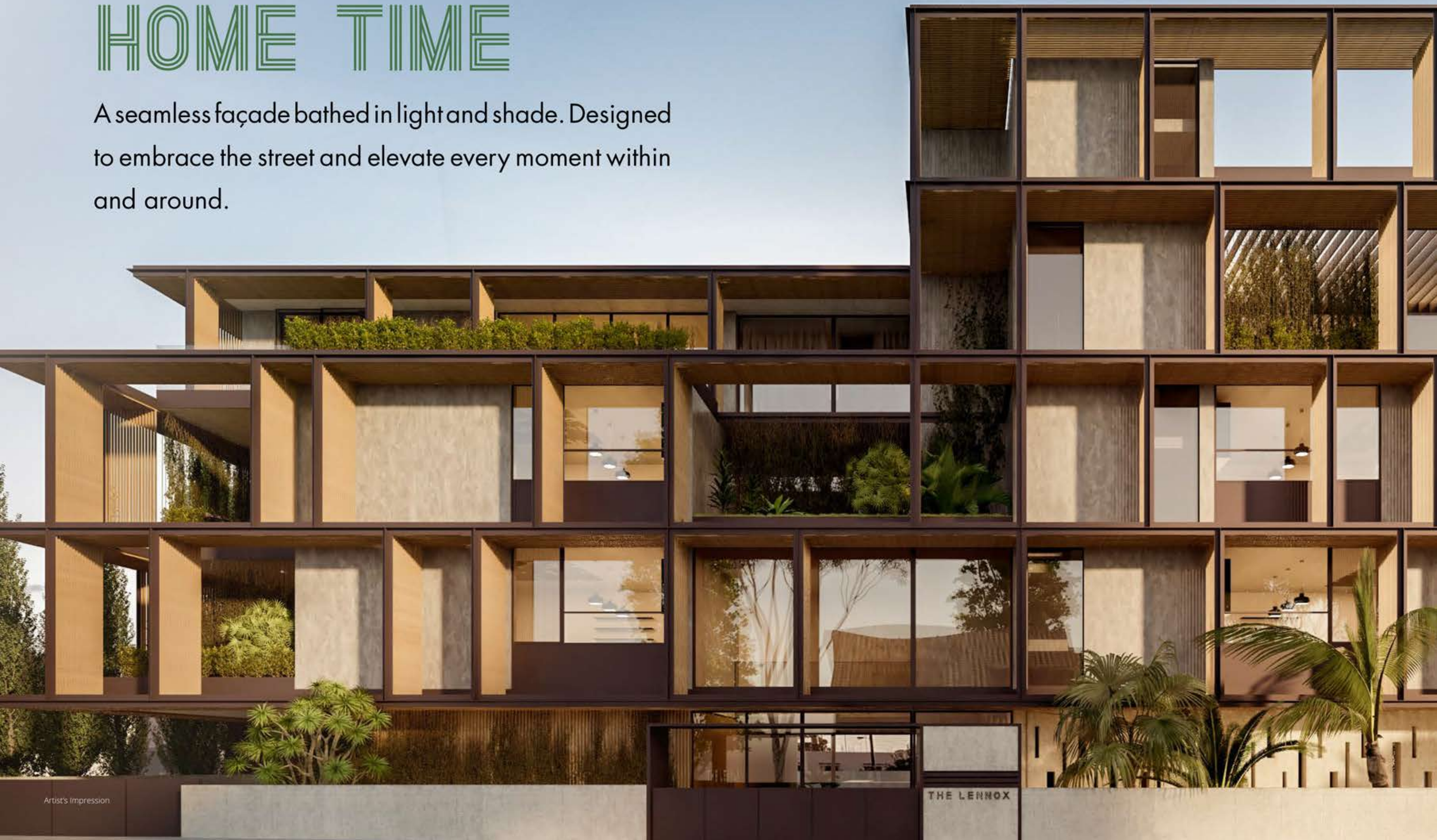
ENCORES OF EDUCATION

With a charming village atmosphere, Ag. Athanasios enjoys exceptional access to a myriad of excellent educational facilities. A flawless composition of style, beauty and elegance, where residents enjoy a confident, relaxed way of life—a unique place to come home to.

CENTRAL TO
SERVICES
LIVING
SHOPPING
TRANSPORT
EDUCATION

HOME TIME

A seamless façade bathed in light and shade. Designed to embrace the street and elevate every moment within and around.

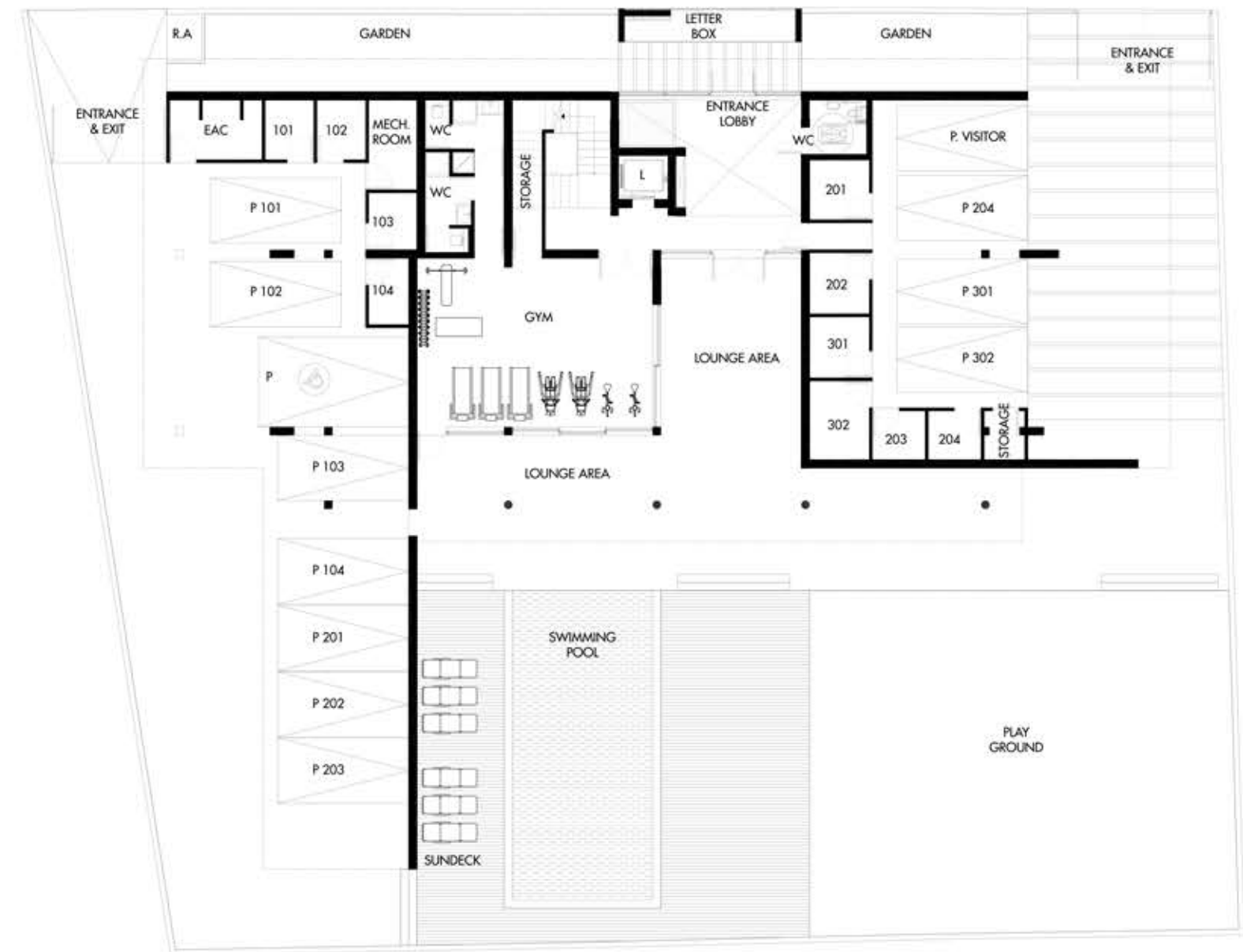


STYLISH, REFINED AND RELAXED

Simply inspired to the last detail. A calm palette with an urban edge. A place to live, share, grow.



FLOOR PLANS



GROUND FLOOR

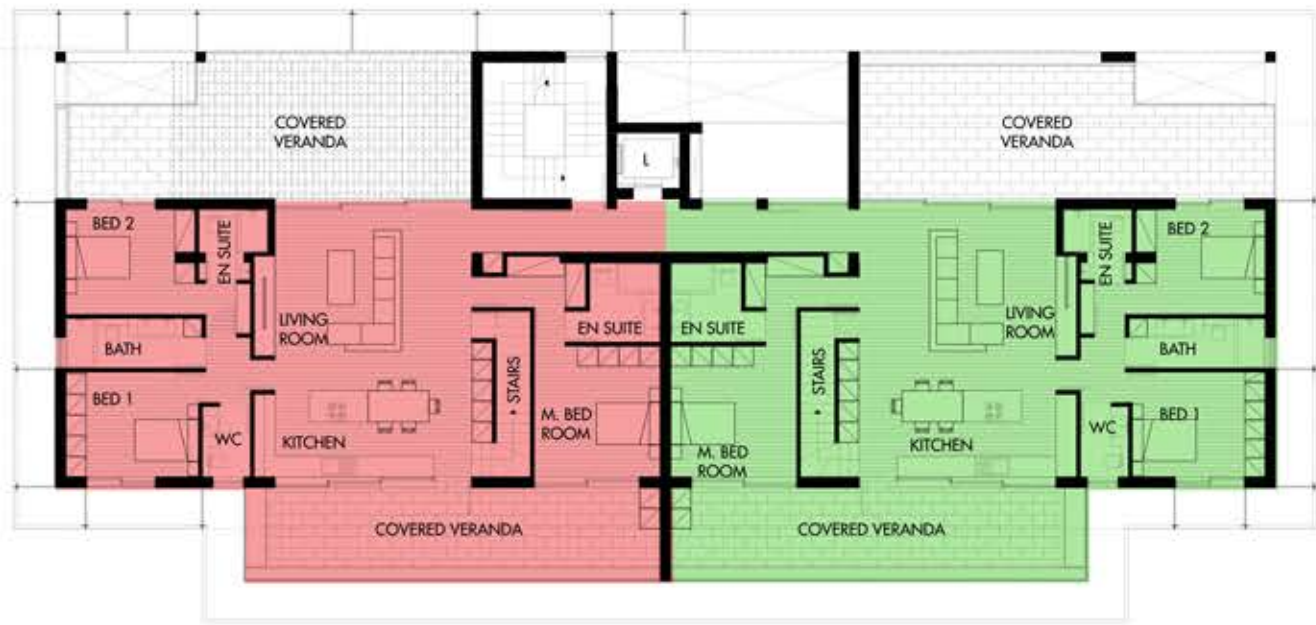


FIRST FLOOR

	FLAT 101	FLAT 102	FLAT 103	FLAT 104
FLOOR	1	1	1	1
BEDROOMS	2	2	2	2
FLAT AREA m ²	100	92	92	100
COVERED VERANDA m ²	17	15	15	17
EXPOSED VERANDA m ²	6	—	—	6
ROOF GARDEN m ²	—	—	—	—
STORE ROOM m ²	5	5	4	4
COMMON AREA m ²	9	9	9	9
PARKING SPACE	1	1	1	1
TOTAL AREA m ²	137	121	120	136

SECOND FLOOR

	FLAT 201	FLAT 202	FLAT 203	FLAT 204
FLOOR	2	2	2	2
BEDROOMS	2	2	2	2
FLAT AREA m ²	100	92	92	100
COVERED VERANDA m ²	16	14	14	16
EXPOSED VERANDA m ²	—	—	—	—
ROOF GARDEN m ²	—	—	—	—
STORE ROOM m ²	6	6	4	5
COMMON AREA m ²	8	8	8	8
PARKING SPACE	1	1	1	1
TOTAL AREA m ²	130	120	118	129



THIRD FLOOR

ROOF GARDEN

	FLAT 301 ■	FLAT 302 ■
FLOOR	3/4	3/4
BEDROOMS	3	3
FLAT AREA m ²	143	143
COVERED VERANDA m ²	15	42
EXPOSED VERANDA m ²	63	38
ROOF GARDEN m ²	59	59
STORE ROOM m ²	6	8
COMMON AREA m ²	13	13
PARKING SPACE	2	2
TOTAL AREA m ²	299	303

LIMASSOL

Young, dynamic, cosmopolitan. There is hardly another coastal town that has been so definitely shaped by foreign influences as Limassol. Known as Neapolis (New Town) in Byzantine times, is a beguiling mix of old and new. Centrally located between two international airports and a stunning seafront promenade it is the largest city of Cyprus in geographical size. Limassol has been ranked by TripAdvisor as the 3rd up-and-coming destination in the world, in its Top 10 Traveler's Choice Destinations on the Rise. In addition to the recognized popularity as a tourism destination, Limassol is also an administrative and business centre, a port, a resort, the centre of the wine industry and home to many archaeological sites. Limassol is an ideal and affordable place in which to invest.





THE DEVELOPER

Planetvision is a property development company with a reputation for innovative projects that energize cities. We believe in building developments that improve, enrich and enhance people's lives. Every project is created with an entirely new vision, designed down to every last detail, drawing on the character and history of the neighbourhood in which it is found.

Planetvision is inspired to focus on building distinctive and uniquely identifiable developments which offer living environments that not only stand the test of time but provide enduring value for generations to come.

*"The Lennox.
A place to retreat.
A place to connect.
A place to live."*

Andreas Pieris
Creative & Marketing Director
Planetvision Properties Ltd

DISCLAIMER

This brochure and the information contained in it does not form part of any contract, and while reasonable effort has been made, this cannot be guaranteed and no representation or warranty is made in that regard. Residence designs and layouts are indicative only and may change. The specification of the residences is the anticipated specification as at the date of this brochure was prepared but may be subject to

change in accordance with permitted variances. Computer generated images and photos are indicative only. All sales remain subject to contract. LENNOX and THE LENNOX are marketing names only. Neither the agents nor any person in their employ has any authority to make or give any representation, warranty or guarantee in respect of or in relation to the development.



www.planetvisionproperties.com

77 77 87 27

info@planetvisionproperties.com

